

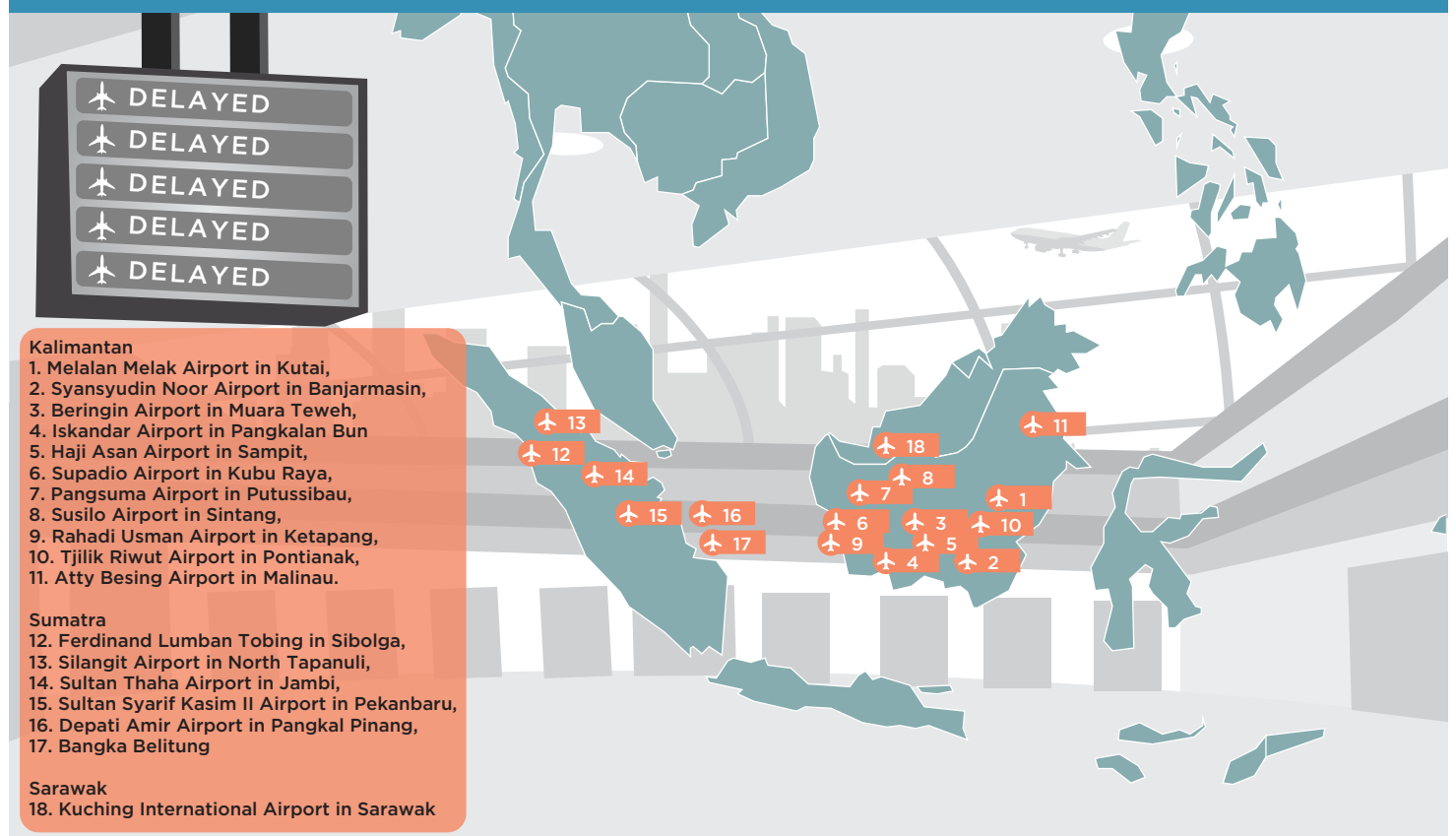
CARI CAPTURES



01 INDONESIA SMOG IMPACTS AIRPORTS

INDONESIA

Airports Significantly Impacted by Smog



Antara News

Heavy smog caused by forest fires in Indonesia has caused delays and even forced the temporary closure two regional of airports in Indonesia and Malaysia.

- ▶ With visibility levels reduced below 800 meters in certain areas of Indonesia over the course of a week, flight schedules across 16 airports within the country including the Pinang Kampai Airport were delayed and cancelled due to safety concerns; at the same time, Malaysia's Kuching International Airport (KIA) in Sarawak was also closed on 10 September due to similar visibility issues
- ▶ The haze, which is caused by the annual burning of forests and

peat bogs to clear land in Indonesia, has seen some 400 wildfire hotspots over the course of the past month alone according to the NOAA-18 satellite; furthermore, severe and unhealthy Air Pollutant Index (API) recordings were observed at several locations as far away as East Malaysia and Singapore

- ▶ Whilst Changi Airport in Singapore has maintained efficient operations, it should be noted that in 2013 Changi Airport management closed operations at the nearby Seletar Airport due to similar concerns, which indicates that worsening conditions may result in further airport closures in the future

Antara News (8 September 2015)

02 ELECTION ABOUT SINGAPORE'S FUTURE AND DELIVERING ON PLANS: PM



The General Election is about Singapore's future, choosing the Government and setting the direction for the country, Prime Minister Lee Hsien Loong said. The People's Action Party (PAP) has been trying to get across the finer points of its policies in areas such as housing, healthcare and education, and will continue to do so.

- ▶ According to him, this election, apart from people and integrity, is also about our vision and our plans for the future, and also whether we're able to deliver on these plans

- ▶ These plans, in the PAP manifesto, are the product of years of work and public consultation, not plans "which sprang out of nowhere one day, a few weeks before the elections"
- ▶ He also gave a rundown of policies the party has worked on, in housing, healthcare and education. He asked voters to compare what the PAP had with what other parties had, and judge "fairly, dispassionately, in your own interest" what was best

[Straits Times \(6 September 2015\)](#)

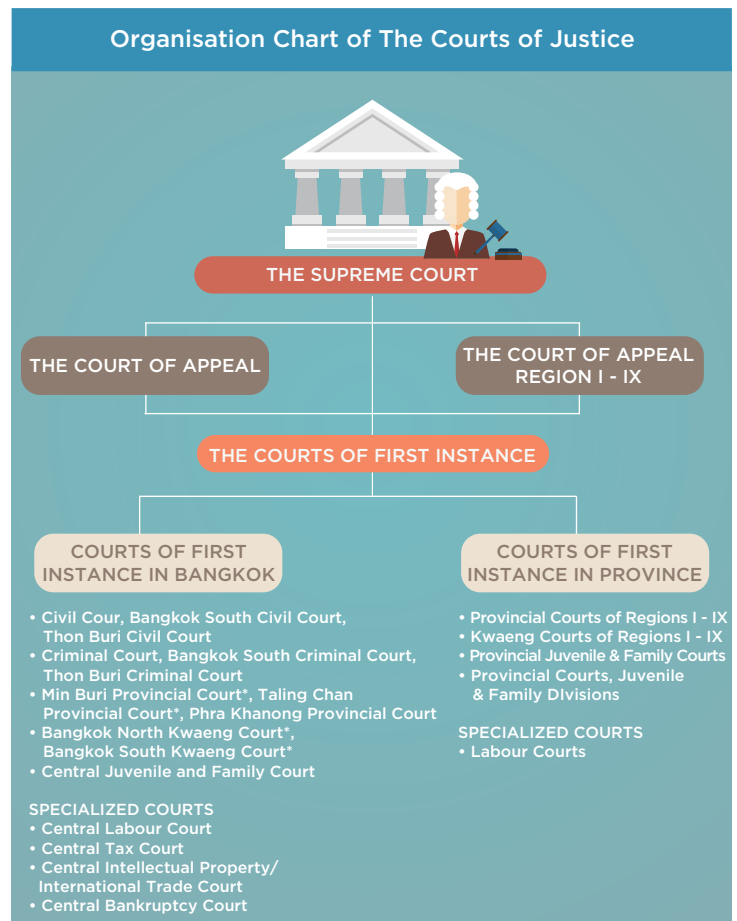
03 CONSTITUTIONAL COURT JUDGE CALLS FOR SPECIALISED COURTS



Jaran Pukditanakul, Constitutional Court judge and former justice permanent secretary, has called for the country to establish specialised courts in order to improve the efficiency of appeals handling.

- ▶ The judge, who spoke at a seminar organised jointly by Justice Ministry and the Thailand Development Research Institute Foundation (TDRI), espoused the benefits of specialised courts, stating that its implementation would help to free up the supreme court and make the judicial process a more efficient one
- ▶ Furthermore, the judge affirmed the extension judicial oversight by the Justice Ministry regarding the development of new legislation and tracking precedents established; the judge also warned that the rule of law within the era of the free market would be much more dynamic and diverse, thus requiring further innovation by the courts
- ▶ The upcoming establishment of the ASEAN Economic Community (AEC) is slated to push Thailand to establish a commerce court in order to deal with international trade disputes; currently, such matters are still covered under Thailand's country civil code

[Bangkok Post \(9 September 2015\)](#)



Courts of Justice

04 JAPAN'S AEON TO OPEN FIRST HANOI MALL NEXT MONTH



Japanese retail giant AEON Co. Ltd. is scheduled to inaugurate its first-ever shopping mall in Hanoi next month. The Hanoi shopping center will be the third of Japan's single-largest shopping mall developer and operator in Vietnam.

- ▶ A five-day introductory labour inspection training course began in Vientiane yesterday, organised by the Ministry of Labour and Social Welfare under the auspices of the 'Improving the Garment Sector in the Lao
- ▶ Long Bien District, around 5km east of Hoan Kiem Lake in the heart of Hanoi, is positioned as a new-type residential area by 2030. AEON MALL Long Bien has four stories above ground, with a total leasable

area of around 72,000 square meters, capable of hosting more than 180 stores

- ▶ Fifty percent of the goods available at AEON MALL Long Bien are Vietnamese-made, whereas 20 percent come from Japan and 30 percent from other markets
- ▶ The Japanese retailer will then have nine malls in Southeast Asia, with Vietnam home to the largest number of its shopping centers in the region

[Tuoi Tre News \(4 September 2015\)](#)



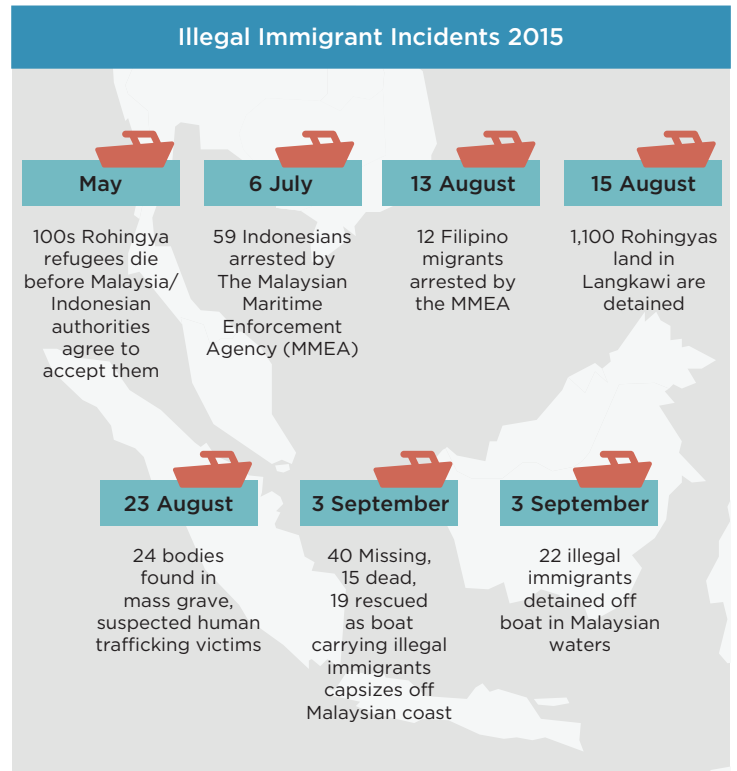
05 MIGRANT BOAT DEATH TOLL RISES



61 bodies were recovered from an overloaded wooden boat off the coast of Malaysia on 3 September as confirmed by maritime officials during a press conference.

- ▶ The continued rising death toll of illegal immigrants has largely been caused by unrest within Myanmar and Bangladesh, with the Thai crackdown on human trafficking also contributing to further deaths as asylum seekers and illegal immigrants alike seek more risky avenues of ingress
- ▶ Whilst the influx of more than 4,000 refugee seekers in the month of May has not seen its equal since, this most recent incident saw only the survival of 20 individuals with a total death toll of 61
- ▶ Currently, most of Malaysia's combined legal and illegal migrant workers are from Indonesia, with said workers taking up jobs within construction, factory work, domestic services, as well as agriculture

[Sydney Morning Herald \(7 September 2015\)](#)



[Foreign Policy](#)

06 JOKOWI KICKS OFF LRT CONSTRUCTION



The first phase of building Jakarta's Light Rail Transit (LRT) has started, with President Joko Widodo pushing the button to officially kick off construction in Jakarta on 9 September.

- ▶ The LRT was part of the mass transportation integration plan, along with the existing Transjakarta busway and the commuter train as well as the Mass Rail Transit (MRT), which is also still under construction
- ▶ The project will be divided into two phases, the second phase starting in early 2016, and both phases projected to finish by 2018
- ▶ The purpose of this training programme is to build the capacity of labour inspectors with basic knowledge and skills relating to their core functions. These include the Labour Law 2014, the minimum wage, and

inspection techniques

- ▶ The first phase of the construction will connect Cibubur in East Bekasi with Dukuh Atas, passing through Cawang. This phase will be 42.1 kilometers long, and include 18 stations. The second phase will extend the network a further 41.5 kilometers, with routes including Cibubur-Bogor, Dukuh Atas-Palmerah-Senayan and Palmerah-Bogor

[Jakarta Post \(9 September 2015\)](#)

07 BOOSTING TOURISM BETWEEN LAOS AND THAILAND'S LOEI



Thailand's Designated Areas for Sustainable Tourism Administration (DASTA) is coming up with a plan to improve infrastructure and prepare routes to cash in on the growing traffic with Laos.

- ▶ The move is aimed at drawing visitors, particularly adventure seeking and high spending tourists, from the two nations and also from third countries into the region
- ▶ The discussion is an extension of an agreement that the two nations entered to co-develop cross-border travel between four provinces in

Thailand - Loei, Nong Khai, Udon Thani and Nong Bua Lamphu - and four areas in Laos - Vientiane, Vientiane prefecture, Xayaburi and Luang Prabang

- ▶ DASTA will soon propose to the government that it turn Loei Airport into an international airport, and will ask the government to build a cable car in Phukradung National Park

[Nation Multimedia \(8 September 2015\)](#)



08 MYANMAR MONITOR



POLITICS

▶ Myanmar opposition leader Aung San Suu Kyi pledged to form a government free from corruption, empower workers and end reliance on foreign aid, as she campaigned on 21 September for the general elections later this year. Suu Kyi, who received a rock star welcome from thousands of supporters in her constituency, has also pledged to speed up democratic reforms, scrutinize investment to limit environmental impacts and amend the junta-drafted constitution.

[Channel NewsAsia \(21 September 2015\)](#)

▶ Myanmar plans to make left-hand drive cars compulsory, state media reported 20 September, causing concern in a country where the vast majority of vehicles remain right-hand drive despite cars driving on the right. The law is an attempt to correct one of the more unusual legacies of decades of junta rule.

[Mizzima \(21 September 2015\)](#)

ECONOMY

▶ Myanmar is bullish about greater inflows of foreign direct investment in the years to come thanks mainly to infrastructure requirement. The Directorate of Investment and Company Administration (DICA) has said, foreign investment worth US\$2.9 billion has been approved since April this year. The Myanmar Investment Commission (MIC) targets US\$6 billion in the fiscal year but in the last year, the amount hit US\$8.01 billion.

[Asia One \(21 September 2015\)](#)

▶ Myanmar's economy is showing strong signs of overheating and has become increasingly vulnerable over the past year amid rising macroeconomic imbalances, according to the International Monetary Fund (IMF). The country will see inflation at 13 percent by year-end due to an expansionary budget and limited monetary policy tools, the IMF said, advising authorities to urgently tighten monetary policy.

[The Myanmar Times \(21 September 2015\)](#)

▶ Myanmar will introduce a new mining law that will allow exports and imports of gold, according to Than Htun Aung, Myanmar's Deputy Minister for the Ministry of Mines. The trade of gold is currently prohibited and Myanmar has no standardised mechanism to determine the purity of locally produced 24-carat gold.

[Mizzima \(16 September 2015\)](#)

▶ There has been an alarming escalation of timber flowing from Myanmar into China over the last three years, according to a report by the London-based Environmental Investigation Agency released in Beijing on 17 September. Illegal timber worth hundreds of millions of dollars flows each year across the border as loggers reach deeper into the country's forests in search of profits, according to the report.

[The Guardian \(17 September 2015\)](#)

09 PHILIPPINES TO HAVE FREE WI-FI BY 2016



PHILIPPINES

The Filipino government has announced a new telecommunications initiative which will see half of all towns and cities covered by free wireless coverage by the end of 2015, with full national coverage coming at the end of 2016.

- ▶ The free internet service is approximated to cost the government US\$32 million a year to run, and will hurt the revenue prospects of telecom providers such as Philippine Long Distance Telephone Co. and Globe Telecom; it should be noted, however, that the free provision of services are capped at speeds of 256kb/s
- ▶ It is expected that private providers will refocus their efforts on the provision of high speed services at lower prices, in turn improving the nation's communications infrastructure at a lowered price point
- ▶ Currently, access to the internet at 1mb/s costs approximately US\$18 a month, three times the global average of US\$5 according to the International Data Corporation (IDC); this is reflective of the Philippine's underdeveloped networking infrastructure and blossoming demand

[Economic Times \(9 September 2015\)](#)

Other ASEAN Nations Offering Free Wi-Fi



[TelcoMasiasia.net](#)

10 SINGAPORE SUSPENDS IMPORT OF HORSES FROM MALAYSIA



SINGAPORE



MALAYSIA

The Agri-Food and Veterinary Authority (AVA) of Singapore has suspended the import of horses from Malaysia since 6 September in a bid to avoid the spread of the equine influenza (EI) that broke out in the neighbouring country.

- ▶ Singapore is free from EI, a highly contagious viral disease that can have devastating effects on the horse industry, according to AVA
- ▶ AVA advises members of the public who may have come into contact with horses in Malaysia, such as when taking part in horse riding activities or during farm stays, to avoid visiting horse establishments in Singapore
- ▶ Clinical signs of equine influenza include fever, nasal discharge, swollen mandibular lymph nodes, dry cough, poor appetite and lethargy
- ▶ The disease is unlikely to cause death and infected horses recover in 3 weeks to 6 months, depending on the severity of infection. EI does not infect or cause disease in humans

[Malay Mail \(8 September 2015\)](#)